

PK2 电器箱布局及接线图

PK2 electrical box layout and wiring diagram

文件编号：ZB.01.PK.10.002

文件版本：1.11

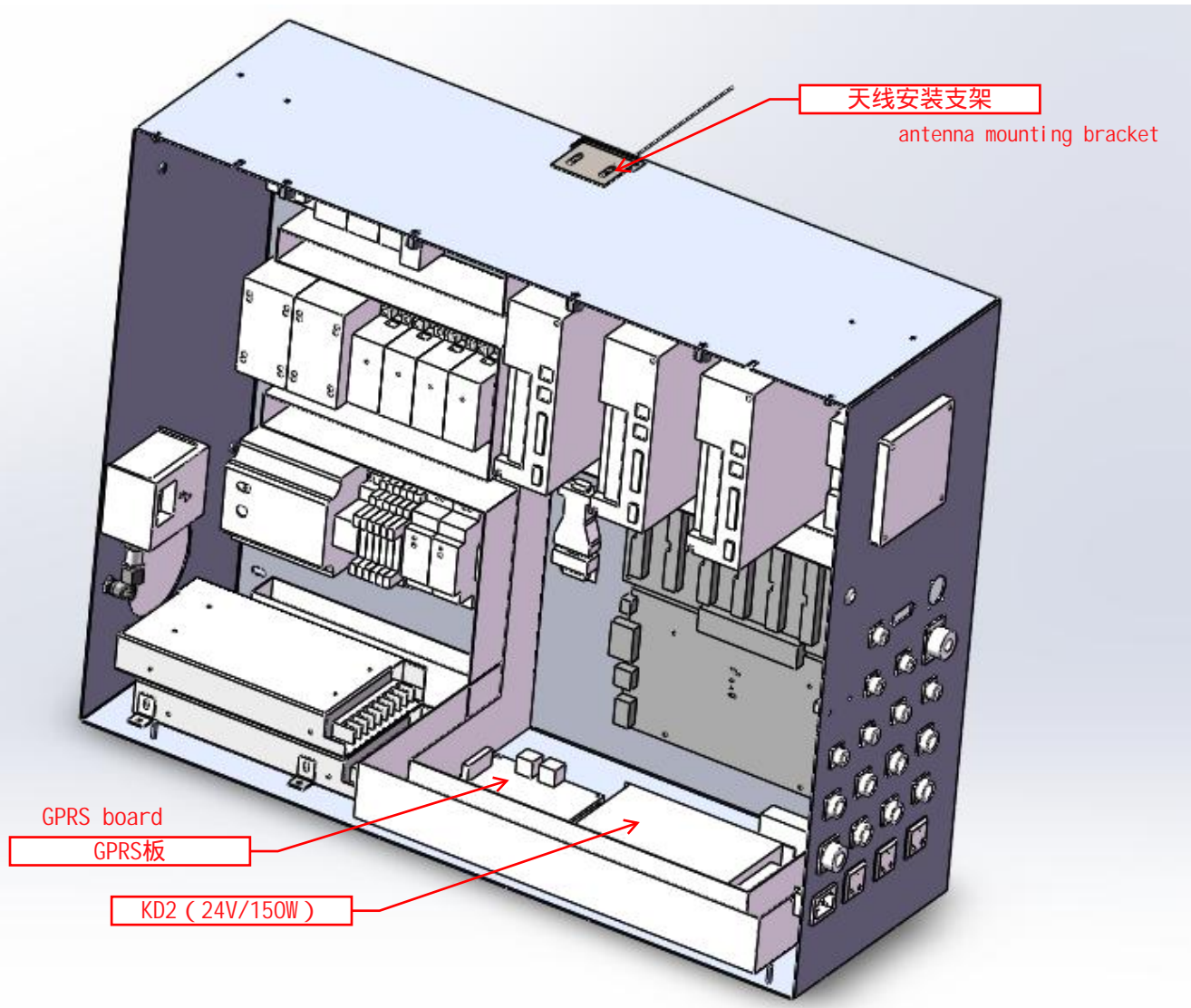
设计： 李尚源 日期： 20201022
审核： 伍郁杰 日期： 20201022
批准： 陈 昊 日期： 20201022

PK2 电器箱版本控制表

序号	版本号	修改记录及说明	修改人	日期
1	1.01	修改成 0604 专用图	毛海民	20190918
2	1.02	修改成 0604 框架步进送料专用图纸	李尚源	20191219
3	1.03	修改 0604 一体机控制	李尚源	20191228
4	1.04	修改 0604 K9 14接线	李尚源	20200218
5	1.05	修改 0604 01D接线	李尚源	20200228
6	1.06	修改 0604 01D接线	李尚源	20200312
7	1.07	新增PK2-KD5电源线PK2-13D，修改PK-送料电机电源线PK45D，BOM表中增加一个48V/350W开关电源，和4个新设计的安装角码	李尚源	20200623
8	1.08	修改了PK2-44D的接线	李尚源	20200811
9	1.09	去掉图纸标错处PK2-45D	李尚源	20200815
10	1.10	修改KM1标错的接触器型号、新增红光防撞	李尚源	20201016
11	1.11	增加K8、K9型号备注	李尚源	20201022
12				
13				
14				
15				

PK2电器箱目录

BOM 代码	代码	物料名称	规格型号	单位	跳层	备注





需新设计4个安装角码

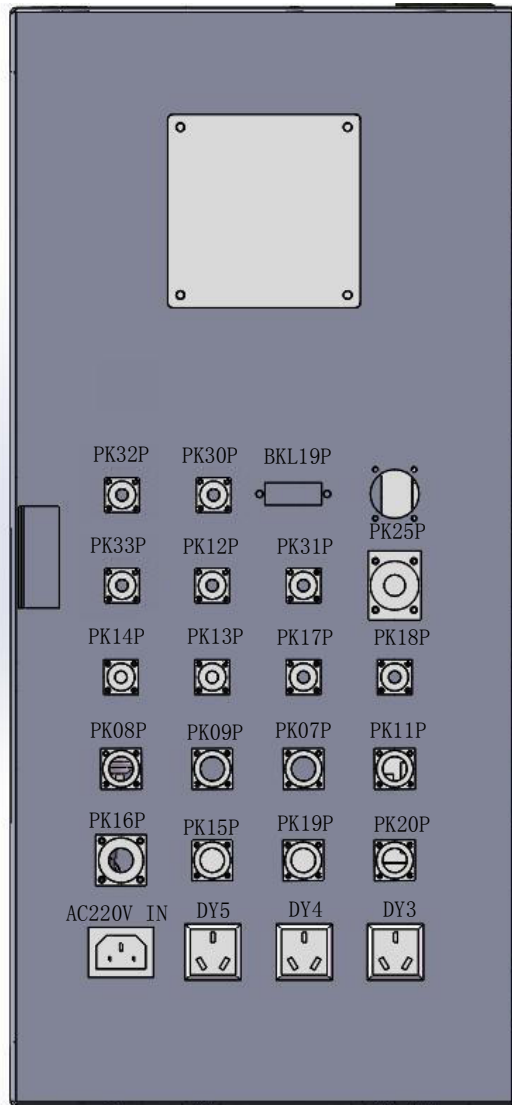
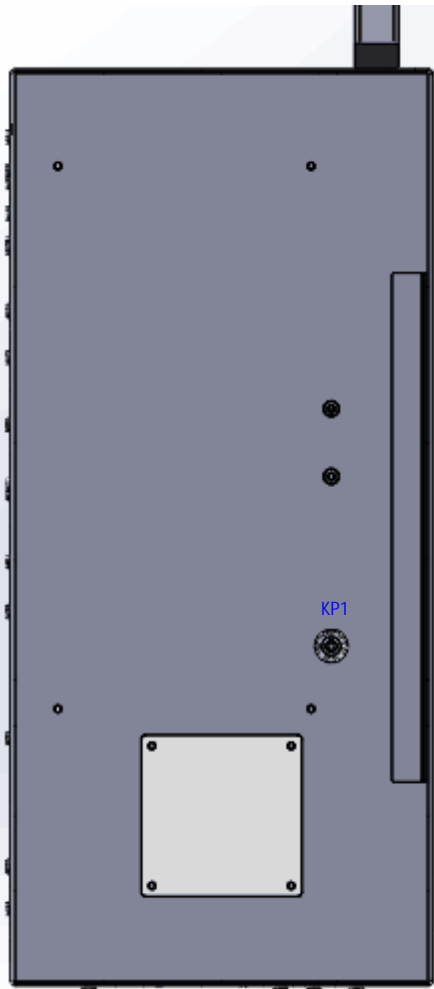
need to newly design 4 installation corner codes

notes: K4-K7 are HF41F-024-ZS 41F-1Z-C2-1 24VDC

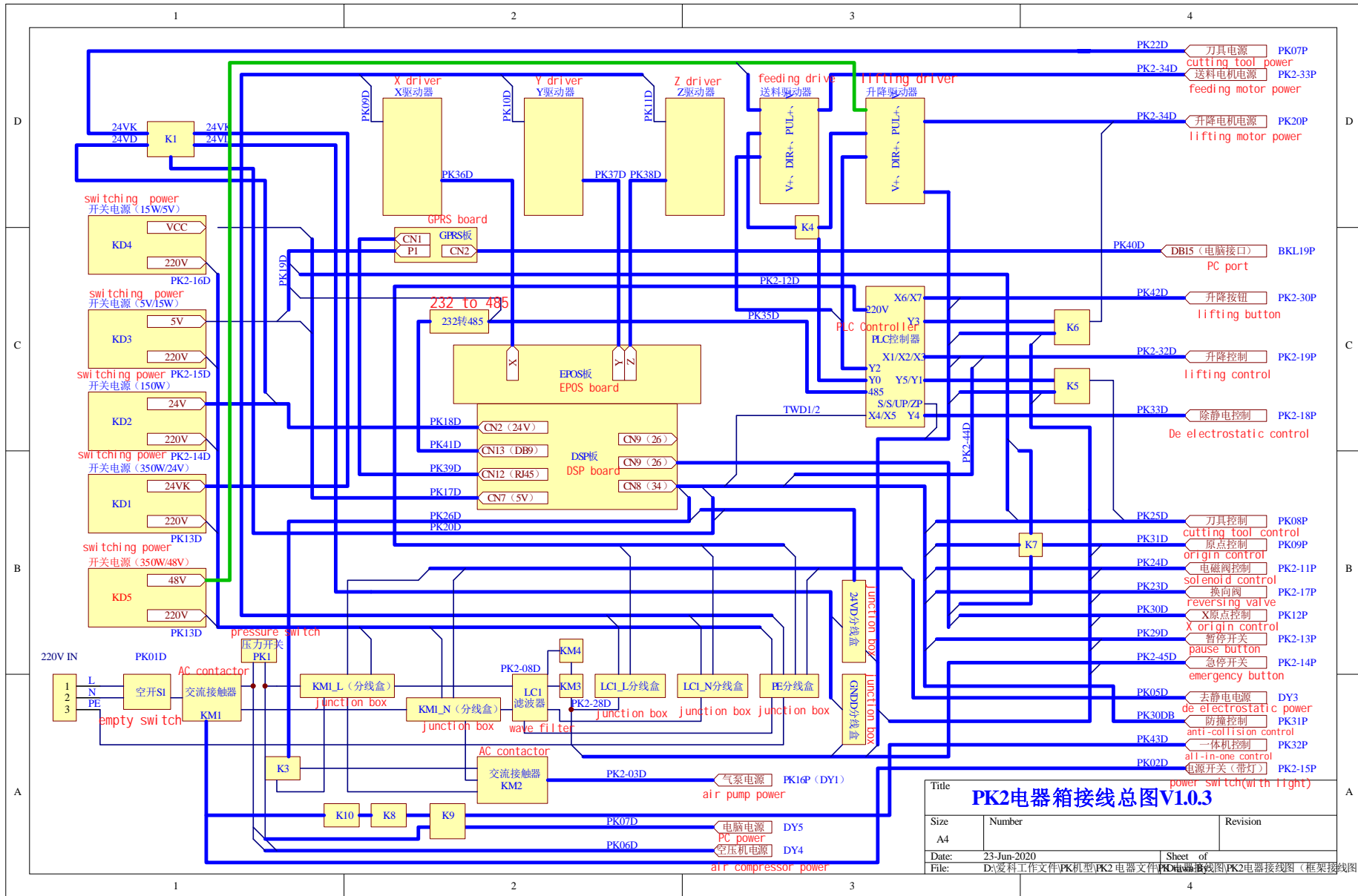
备注：K4-K7 为HF41F-024-ZS 41F-1Z-C2-1 24VDC

备注：K8、K9为HF41F-012-ZS 41F-1Z-C2-1 12VDC

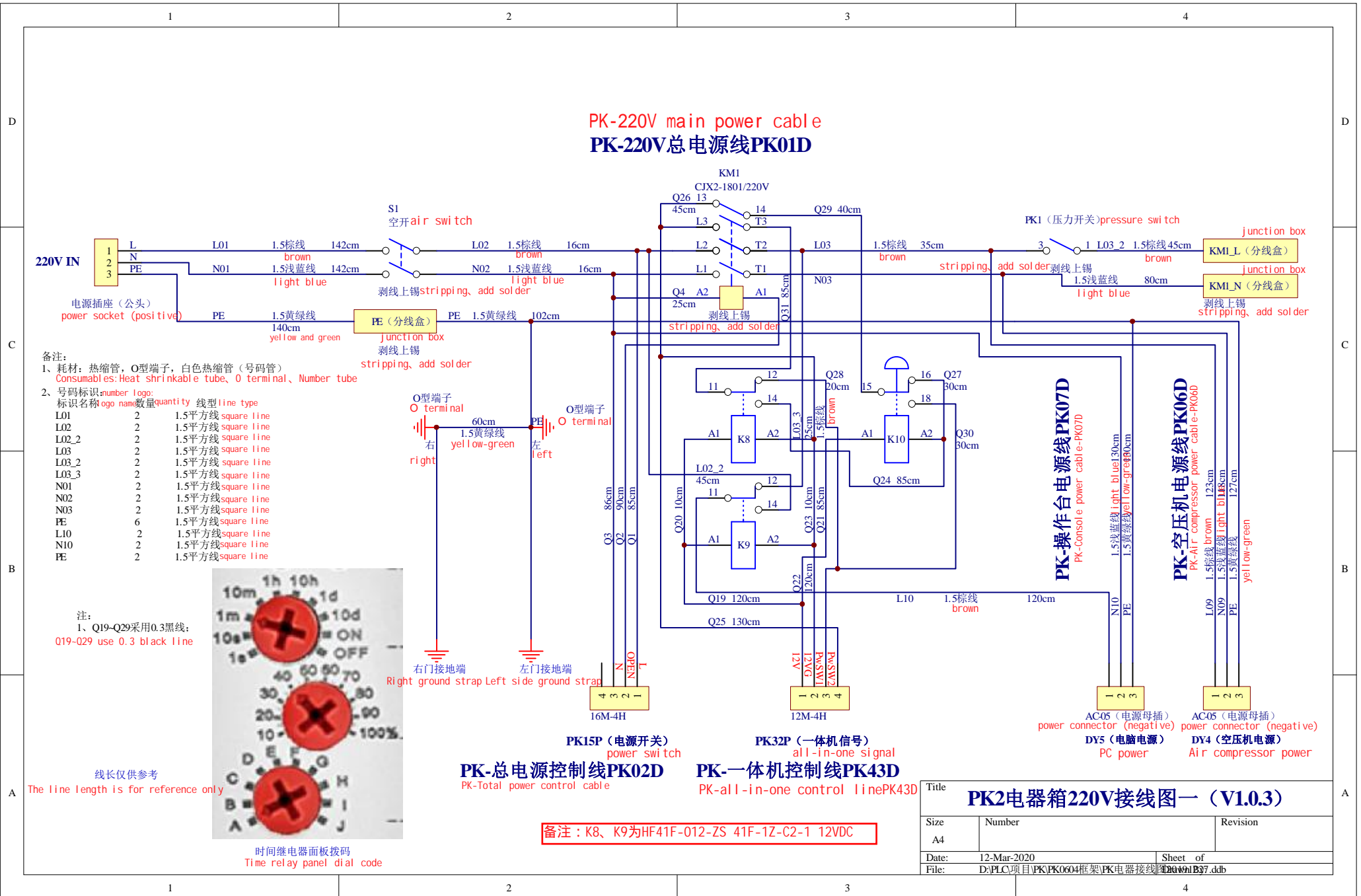
notes: K8 and K9 are HF41F-012-ZS 41F-1Z-C2-1 12VDC

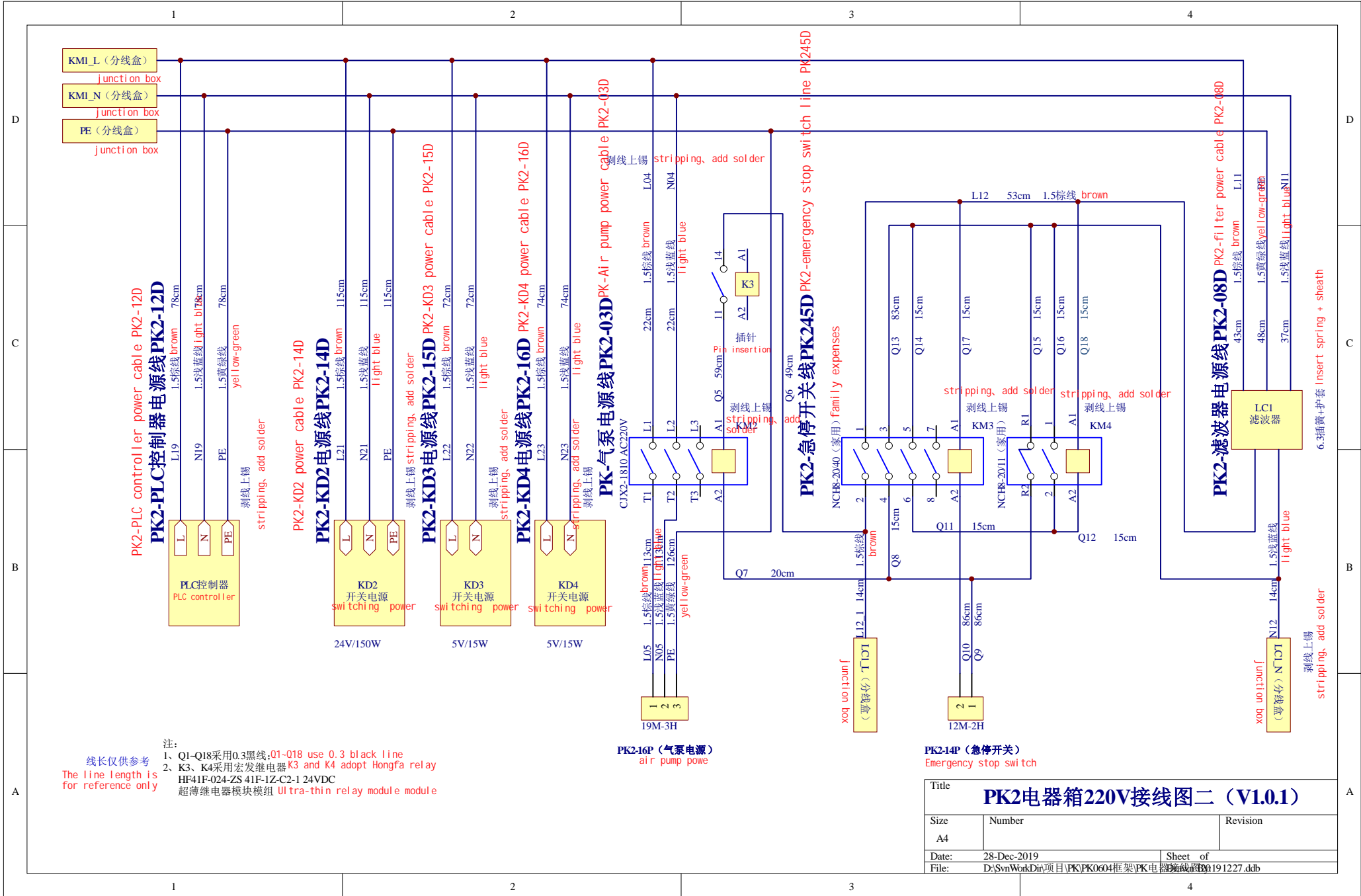


- BKL19P: PC 通讯 PC communication
- PK07P: 振动刀电源 EOT power
- PK08P: 刀具控制 cutting tool control
- PK09P: Y 原点、Z 原点、EOT 控制 Y origin、Z origin、EOT control
- PK11P: 吸料电磁阀和压料电磁阀控制 suction/pressing solenoid control
- PK12P: X 原点 X origin
- PK13P: 暂停 pause button
- PK14P: 急停 emergency button
- PK15P: 电源开关 power switch
- PK16P: 气泵电源 air pump power
- PK17P: 换向电磁阀控制 reversing solenoid valve control
- PK18P: 去静电电磁阀控制 De electrostatic solenoid valve control
- PK19P: 升降光电控制 lifting sensor control
- PK20P: 升降电机电源 lifting motor power
- PK25P: 显示屏通讯 (功能未设计, 暂不装) display communication (not available for now)
- PK31P: 防撞控制 anti-collision control
- PK30P: 升降按钮控制 lift button control
- PK32P: 一体机控制 all-in-one control
- PK33P: 送料电机电源 feeding motor power
- DY3: 离子发生器电源 ion generator power supply
- DY4: 空压机电源 air compressor power
- DY5: 电脑电源 PC power
- AC220V IN: 220V 电源输入端 220V power input



Title		
PK2电器箱接线总图V1.0.3		
Size	Number	Revision
A4		
Date:	23-Jun-2020	Sheet of
File:	D:\爱科工作文件\PK机型\PK2电器文件\PK2电器接线图 (框架接线图).dib	PK2电器接线图 (框架接线图)



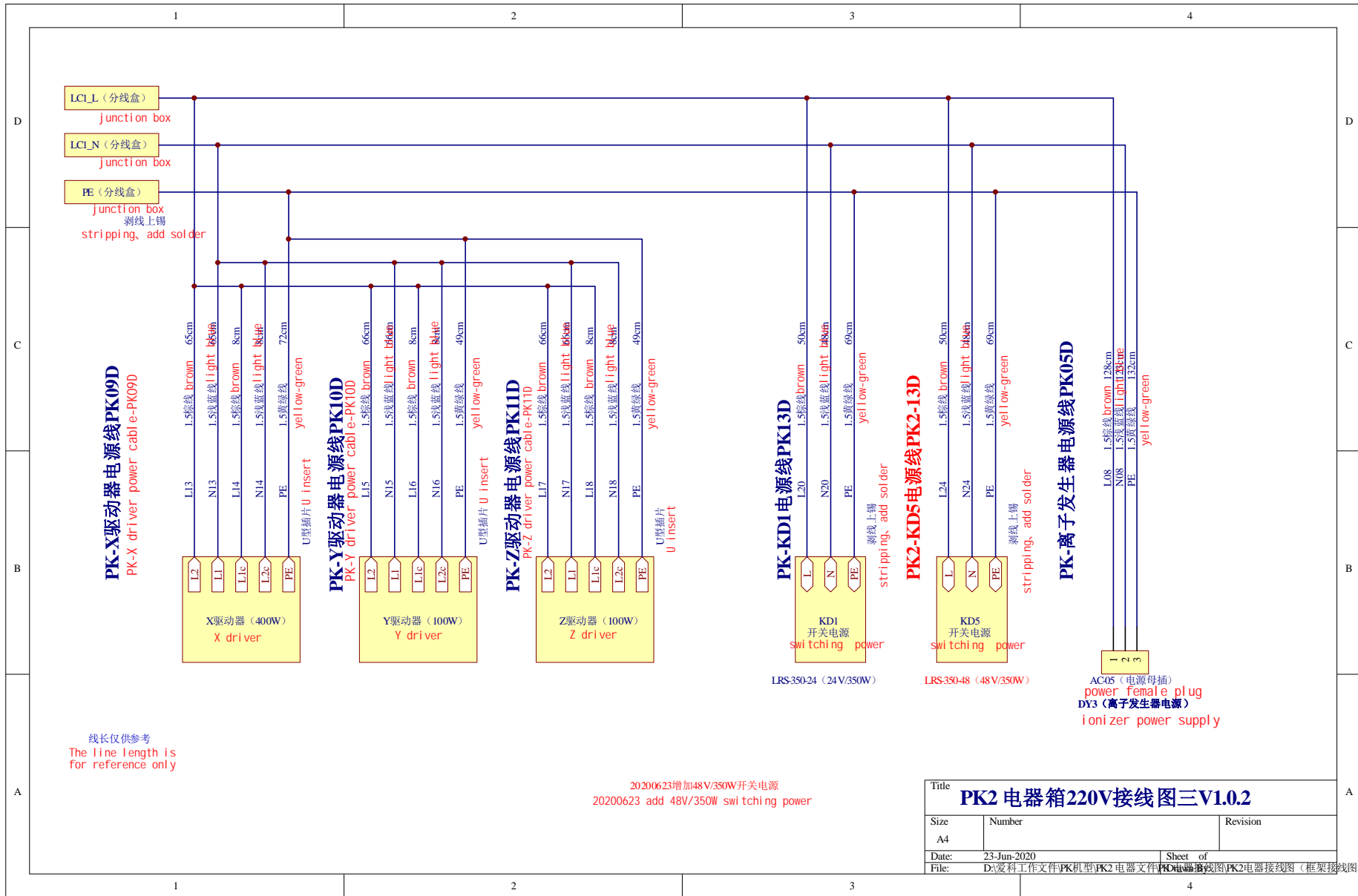


注：
 1、Q1-Q18采用0.3黑线; Q1-Q18 use 0.3 black line
 2、K3、K4采用宏发继电器 K3 and K4 adopt Hongfa relay
 HF41F-024-ZS 41F-1Z-C2-1 24VDC
 超薄继电器模块模组 Ultra-thin relay module module

线长仅供参考
 The line length is for reference only

PK2-14P (急停开关)
 Emergency stop switch

Title		
PK2电器箱220V接线图二 (V1.0.1)		
Size	Number	Revision
A4		
Date:	28-Dec-2019	Sheet of
File:	D:\SvnWorkDir\项目\PK\PK0604\框架\PK电器接线图\191227.dbb	



线长仅供参考
The line length is for reference only

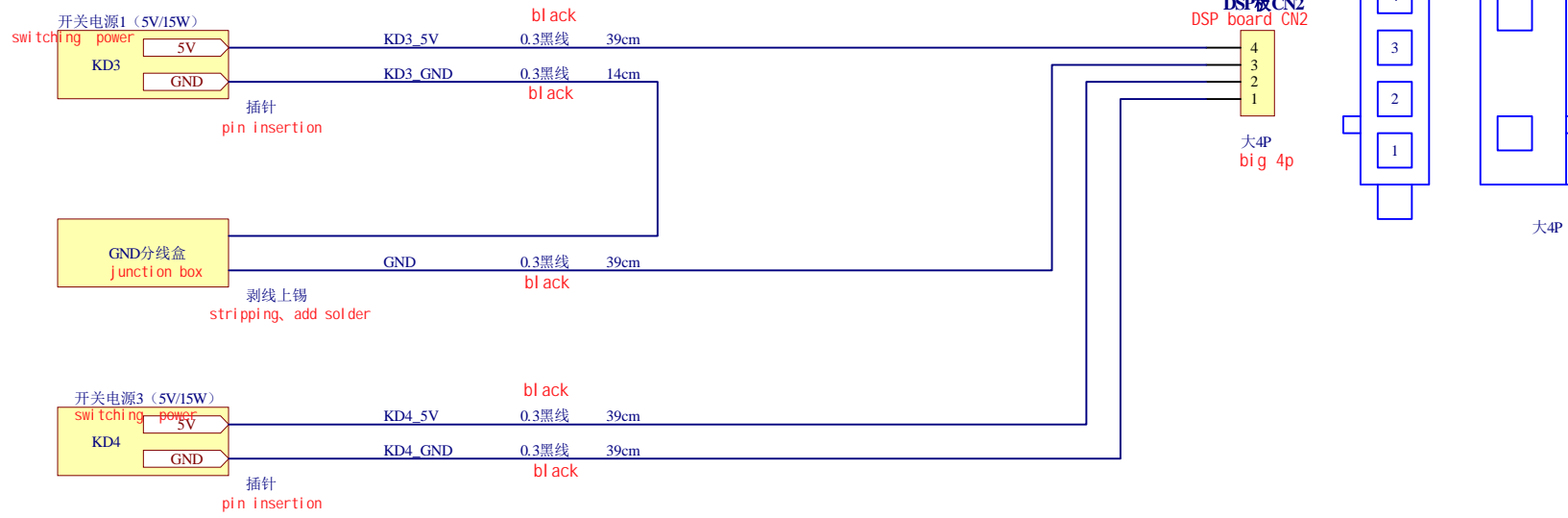
20200623增加48V/350W开关电源
20200623 add 48V/350W switching power

Title **PK2 电器箱220V接线图三V1.0.2**

Size A4	Number	Revision
Date: 23-Jun-2020	Sheet of	
File: D:\爱科工作文件\PK2 电器文件\PK2 电器接线图\PK2 电器接线图 (框架接线图).dib		

PK-DSP板5V电源线PK17D

PK-DSP board power cable(5V)-PK17D

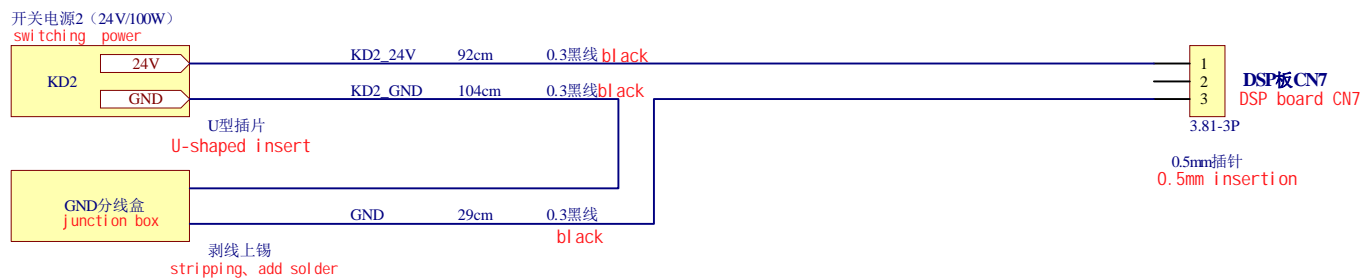


线长仅供参考
The line length is for reference only

Title			PK2电器箱DSP板5V电源接线图 V1.0.0		
Size	Number			Revision	
A4					
Date:	28-Dec-2019	Sheet of			
File:	D:\SvnWorkDir\项目\PK\PK0604\框架\PK电器箱\20191227.ddb				

PK-DSP板24V电源线PK18D

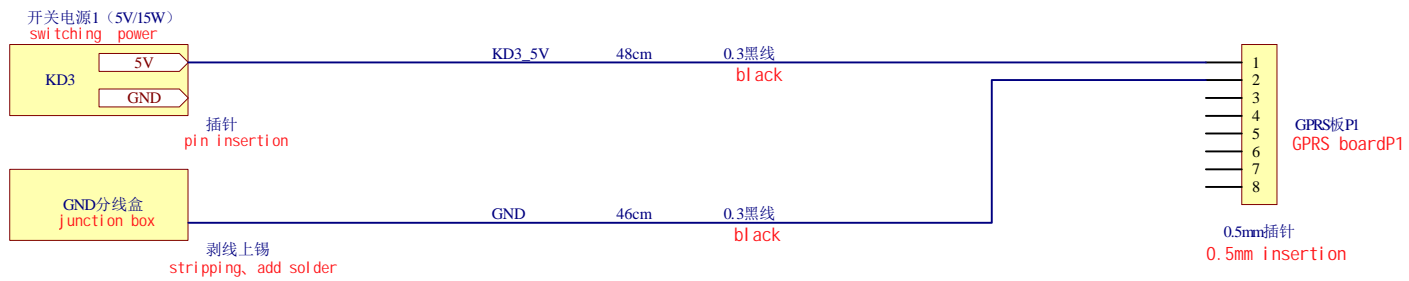
PK-DSP board power cable(24V)-PK18D



线长仅供参考
The line length is for reference only

Title		
PK2电器箱DSP板24V电源接线图 V1.0.0		
Size	Number	Revision
A4		
Date:	28-Dec-2019	Sheet of
File:	D:\SvnWorkDir\项目\PK\PK0604框架\PK电器箱\20191227.ddb	

PK-GPRS板电源线PK19D
 PK-GPRS board power cable-PK19D

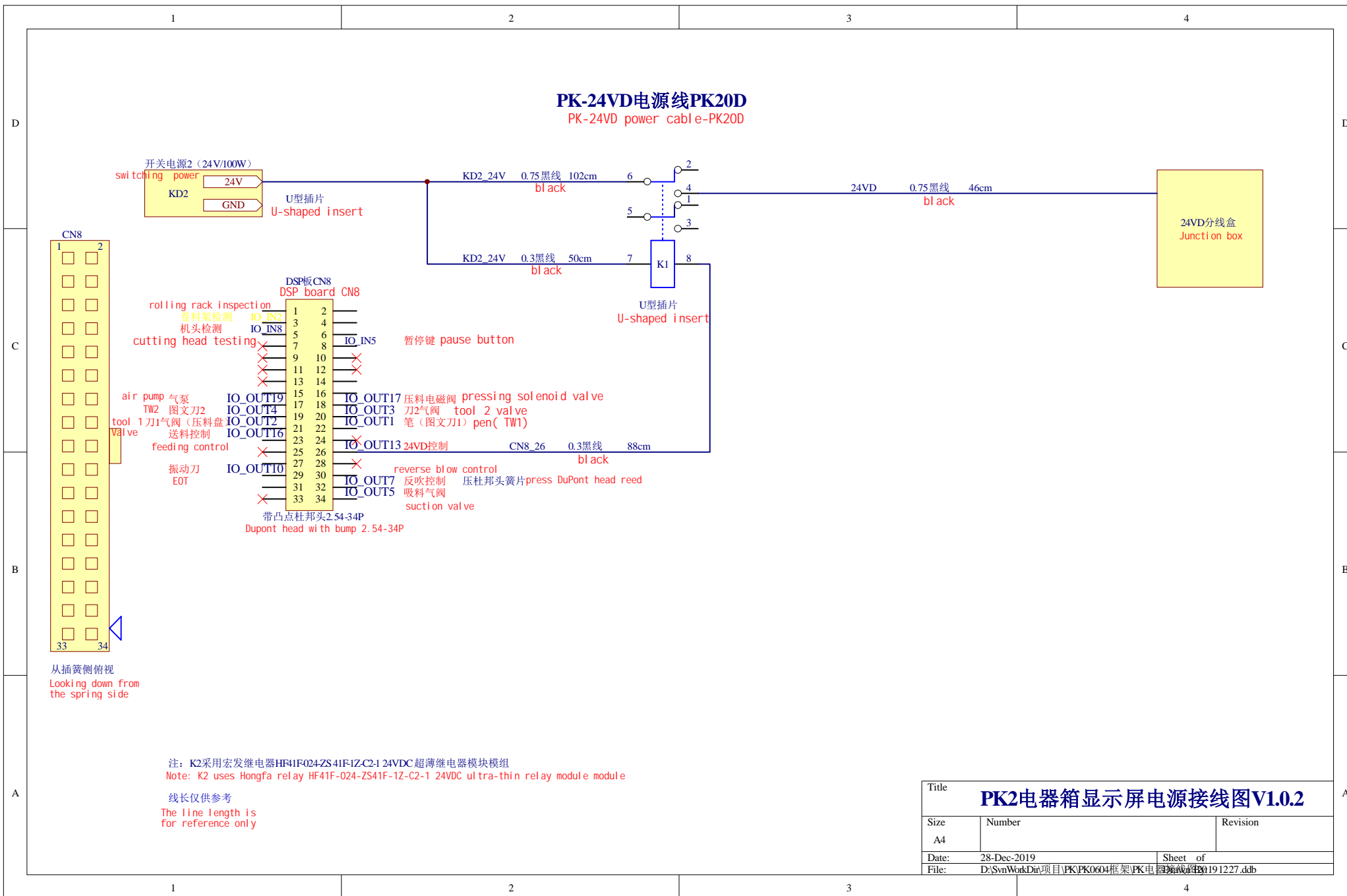


线长仅供参考
 The line length is
 for reference only

Title		
PK2电器箱GPRS板电源接线图V1.0.0		
Size	Number	Revision
A4		
Date:	28-Dec-2019	Sheet of
File:	D:\SvnWorkDir\项目\PK\PK0604框架\PK电器箱\20191227.ddb	

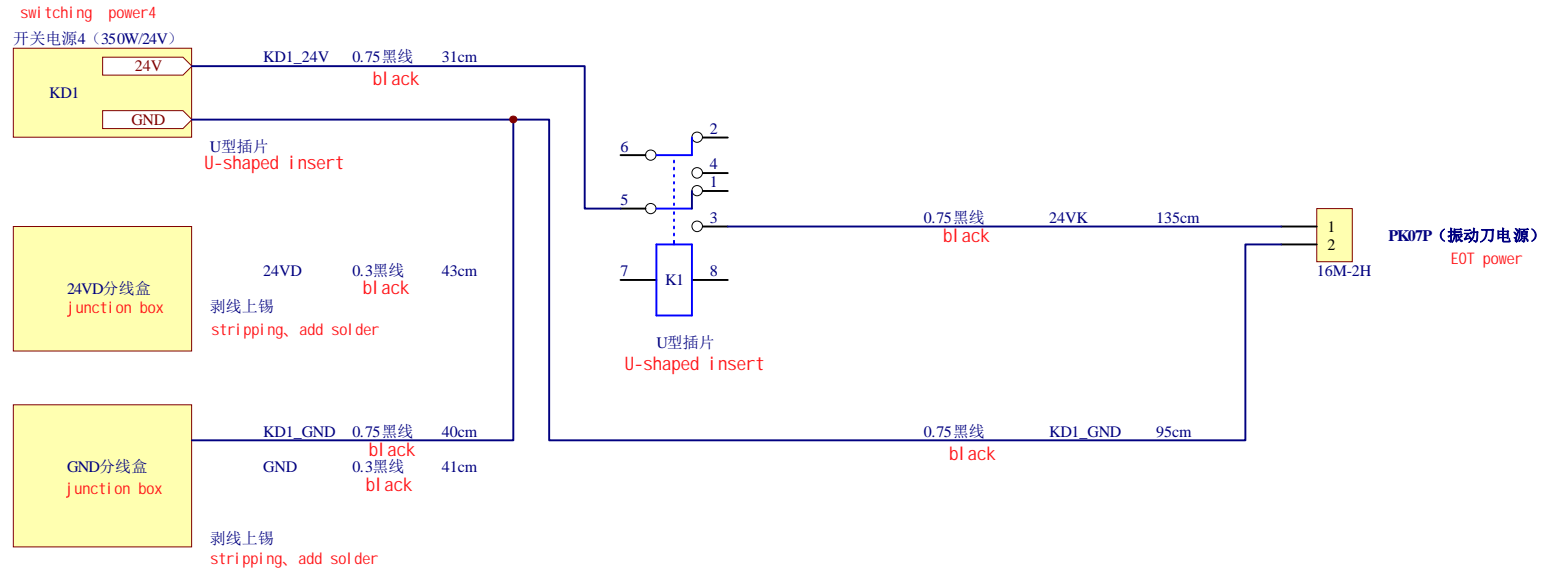
PK-24VD电源线PK20D

PK-24VD power cable-PK20D



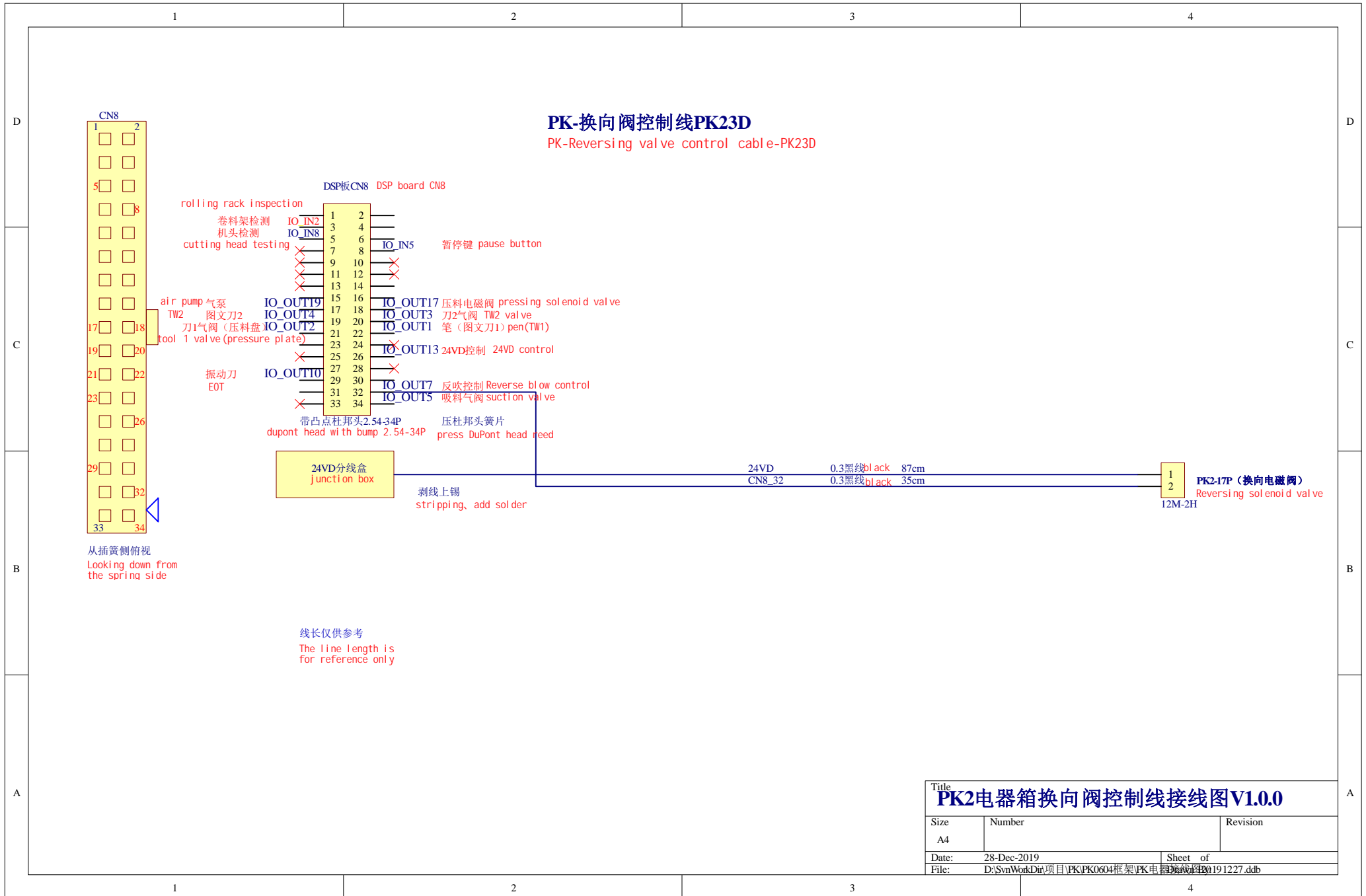
PK-刀具电源线PK22D

PK-24VD power cable-PK20D



线长仅供参考
The line length is
for reference only

Title		
PK2电器箱刀具电源接线图V1.0.0		
Size	Number	Revision
A4		
Date:	28-Dec-2019	Sheet of
File:	D:\SvnWorkDir\项目\PK\PK0604框架\PK电器接线图\191227.ddb	



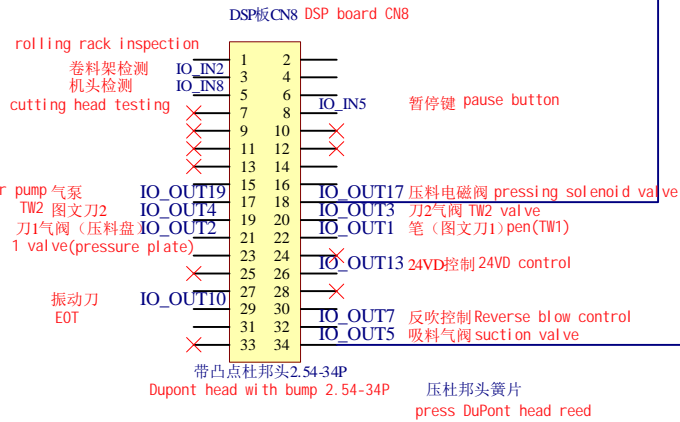
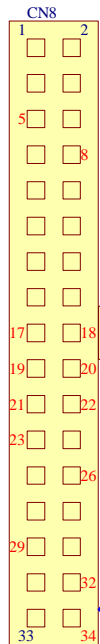
Title		
PK2电器箱换向阀控制线接线图V1.0.0		
Size	Number	Revision
A4		
Date:	28-Dec-2019	Sheet of
File:	D:\SvnWorkDir\项目\PK\PK0604框架\PK电器箱控制线\191227.ddb	

PK-吸料/压料控制线PK24D

PK-Suction/pressing control cable-PK24D



剥线上锡
stripping, add solder



带凸点杜邦头2.54-34P
Dupont head with bump 2.54-34P

压杜邦头簧片
press DuPont head reed

线长仅供参考
The line length is for reference only

从插簧侧俯视
Looking down from the spring side

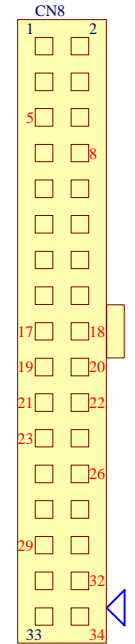
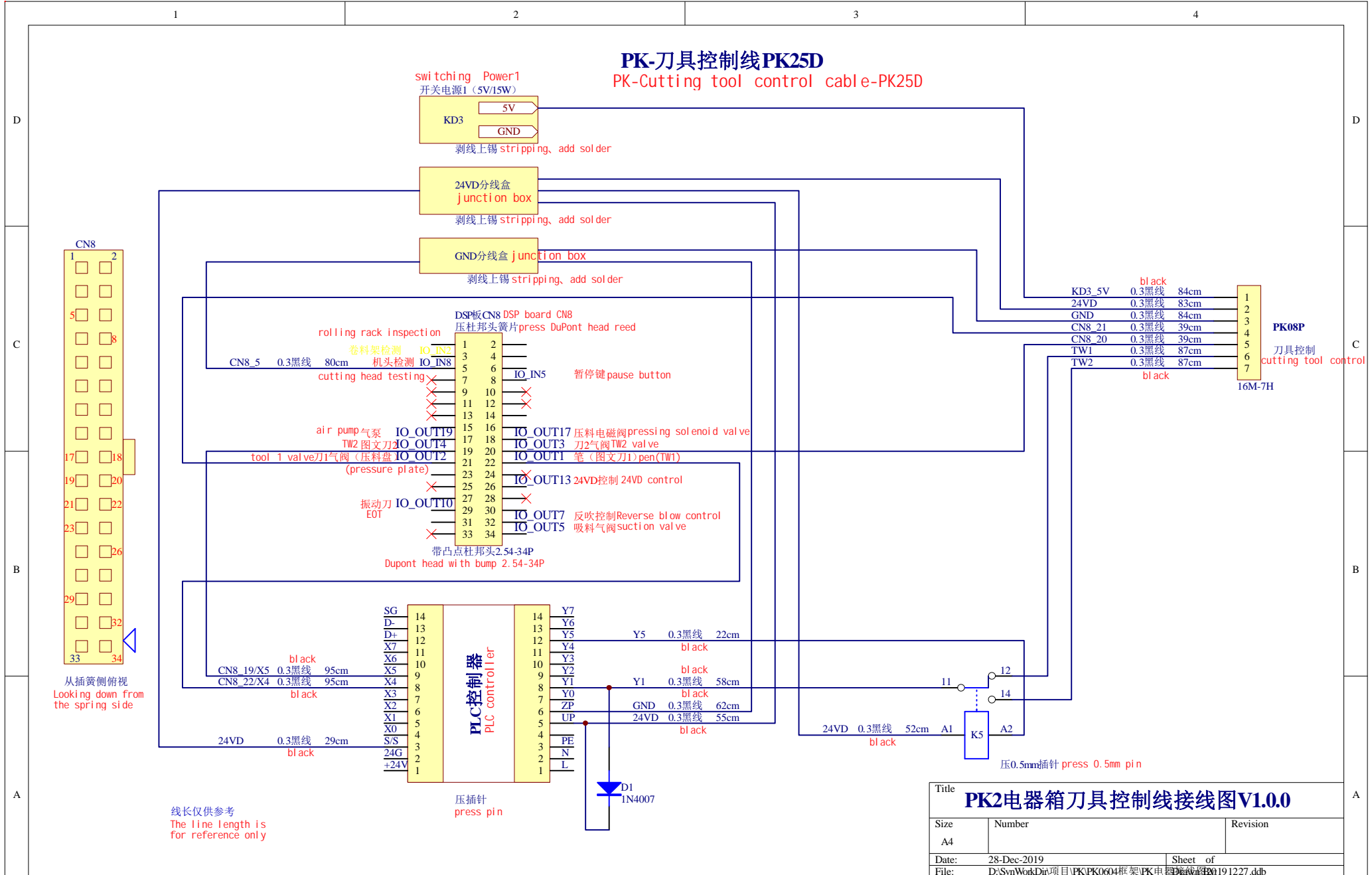
solonoid valve control (suction/pressing)
电磁阀控制(吸料/压料)



PK2-11P (吸料/压料电磁阀)
suction/pressing solonoid valve

Title PK2电器箱吸料&压料控制线接线图V1.0.0		
Size A4	Number	Revision
Date: 28-Dec-2019	Sheet of	
File: D:\SvnWorkDir\项目\PK\PK0604\框架\PK电器箱\20191227.ddb		

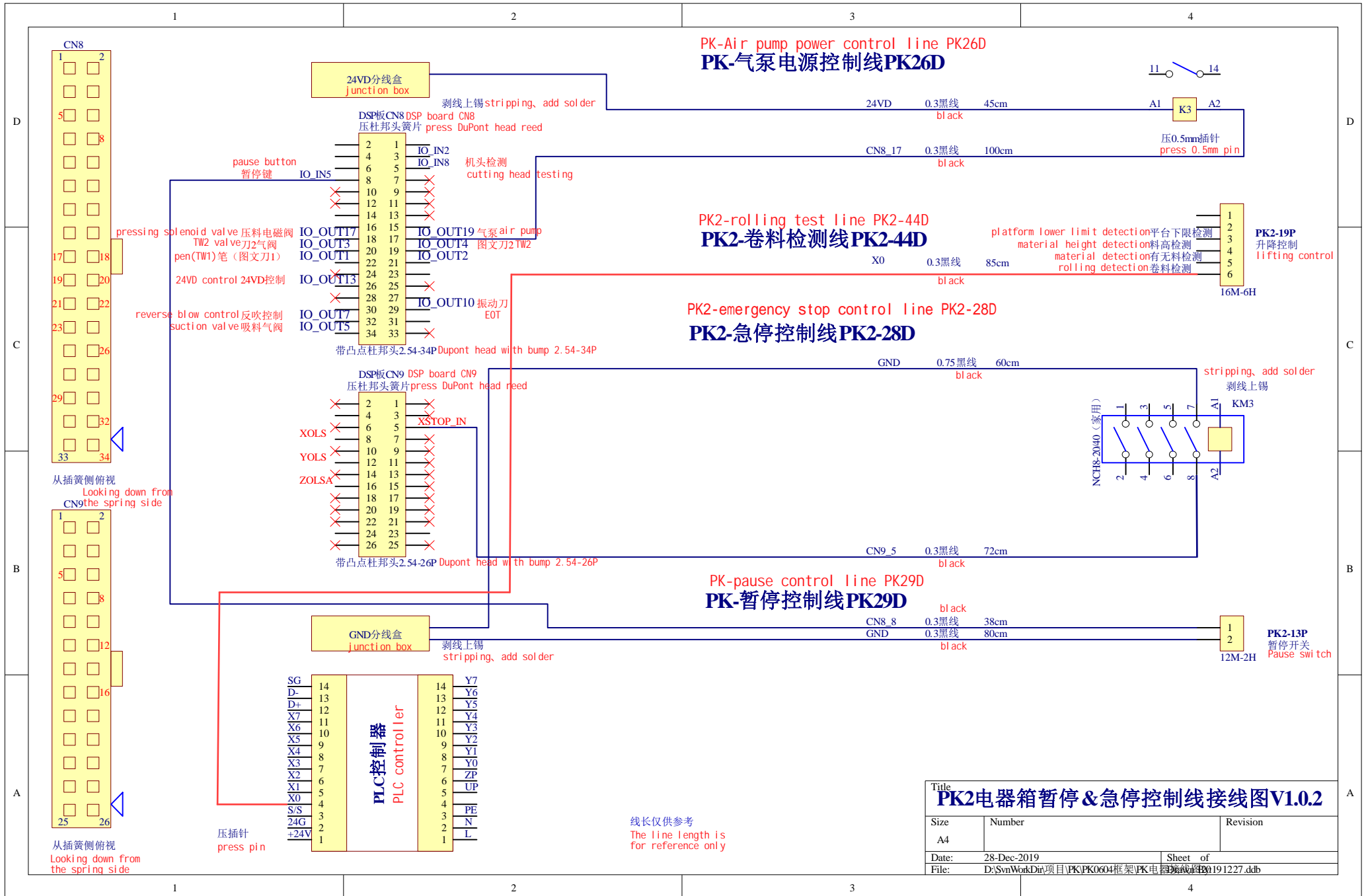
PK-刀具控制线PK25D PK-Cutting tool control cable-PK25D



从插簧侧俯视
Looking down from the spring side

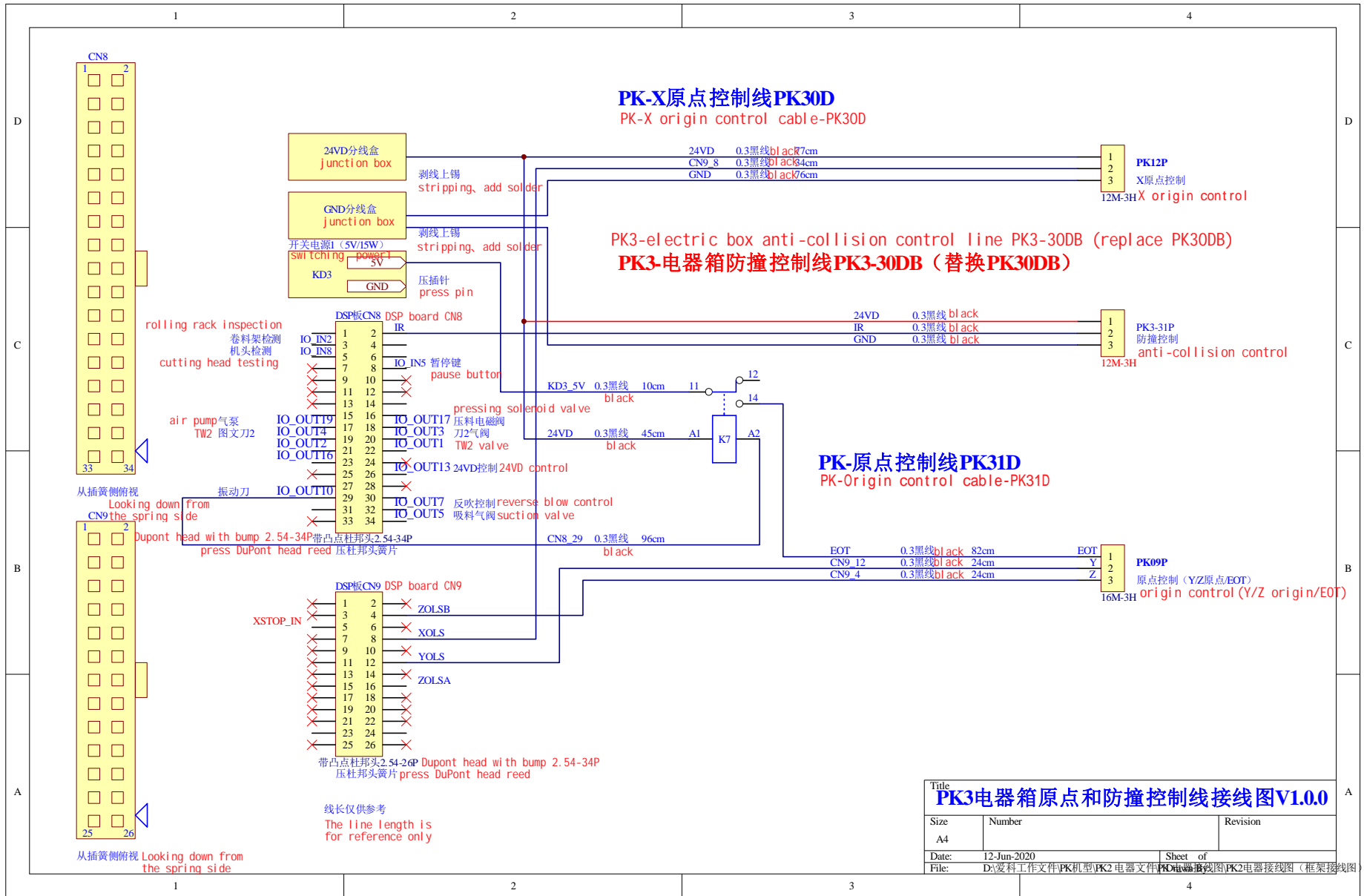
线长仅供参考
The line length is for reference only

Title		
PK2电器箱刀具控制线接线图V1.0.0		
Size	Number	Revision
A4		
Date:	28-Dec-2019	Sheet of
File:	D:\SvnWorkDir\项目\PK\PK0604\框架\PK电器箱\20191227.ddb	19



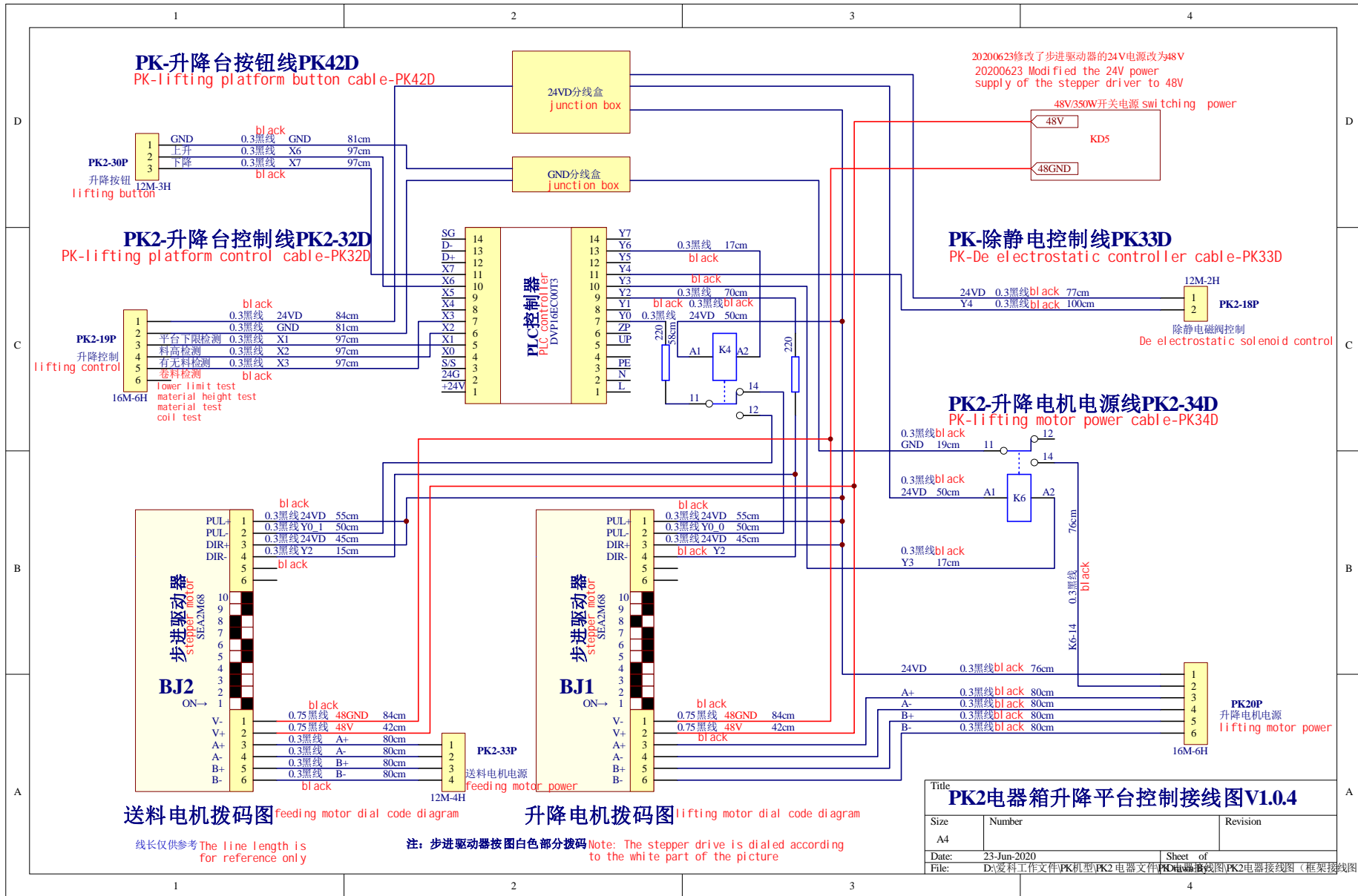
Title		
PK2电器箱暂停&急停控制线接线图V1.0.2		
Size	Number	Revision
A4		
Date:	28-Dec-2019	Sheet of
File:	D:\SvnWorkDir\项目\PK\PK0604框架\PK电器箱\20191227.ddb	19/1227

线长仅供参考
The line length is for reference only



Title PK3电器箱原点和防撞控制线接线图V1.0.0

Size A4	Number	Revision
Date: 12-Jun-2020	Sheet of	
File: D:\麦科工作文件\PK机型\PK2电器文件\PK3电器接线图\PK3电器接线图 (框架接线图).dib		



PK-升降台按钮线PK42D
PK-lifting platform button cable-PK42D

1	GND	0.3黑线	GND	81cm
2	上升	0.3黑线	X6	97cm
3	下降	0.3黑线	X7	97cm

升降按钮
lifting button
12M-3H

PK2-升降台控制线PK2-32D
PK-lifting platform control cable-PK32D

1	平台下限检测	0.3黑线	X1	97cm
2	料高检测	0.3黑线	X2	97cm
3	有料检测	0.3黑线	X3	97cm
4	卷料检测	0.3黑线	X3	97cm
5	lower limit test	0.3黑线	X1	97cm
6	material height test	0.3黑线	X2	97cm
	material test	0.3黑线	X3	97cm
	coil test	0.3黑线	X3	97cm

升降控制
lifting control
16M-6H

1	PUL+	0.3黑线	24VD	55cm
2	PUL-	0.3黑线	Y0_1	50cm
3	DIR+	0.3黑线	24VD	45cm
4	DIR-	0.3黑线	Y2	15cm
5		black		
6		black		
10				
9				
8				
7				
6				
5				
4				
3				
2				
1				
V-		0.75黑线	48GND	84cm
V+		0.75黑线	48V	42cm
A+		0.3黑线	A+	80cm
A-		0.3黑线	A-	80cm
B+		0.3黑线	B+	80cm
B-		0.3黑线	B-	80cm

送料电机电源
feeding motor power
12M-4H

送料电机拨码图 feeding motor dial code diagram

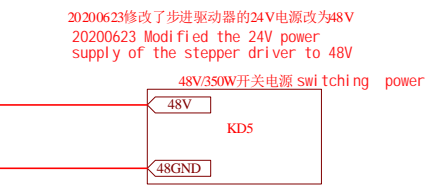
线长仅供参考 The line length is for reference only

1	PUL+	0.3黑线	24VD	55cm
2	PUL-	0.3黑线	Y0_0	50cm
3	DIR+	0.3黑线	24VD	45cm
4	DIR-	0.3黑线	Y2	15cm
5		black		
6		black		
10				
9				
8				
7				
6				
5				
4				
3				
2				
1				
V-		0.75黑线	48GND	84cm
V+		0.75黑线	48V	42cm
A+		0.3黑线	A+	80cm
A-		0.3黑线	A-	80cm
B+		0.3黑线	B+	80cm
B-		0.3黑线	B-	80cm

升降电机电源
lifting motor power
12M-4H

升降电机拨码图 lifting motor dial code diagram

注：步进驱动器按图白色部分拨码 Note: The stepper drive is dialed according to the white part of the picture



PK-除静电控制线PK33D
PK-De electrostatic controller cable-PK33D

1	24VD	0.3黑线	black	77cm
2	Y4	0.3黑线	black	100cm

除静电电磁阀控制
De electrostatic solenoid control
12M-2H
PK2-18P

PK2-升降电机电源线PK2-34D
PK-lifting motor power cable-PK34D

1	GND	0.3黑线	black	19cm
2	24VD	0.3黑线	black	50cm
3	Y3	0.3黑线	black	17cm
4	24VD	0.3黑线	black	76cm
5	A+	0.3黑线	black	80cm
6	A-	0.3黑线	black	80cm
7	B+	0.3黑线	black	80cm
8	B-	0.3黑线	black	80cm

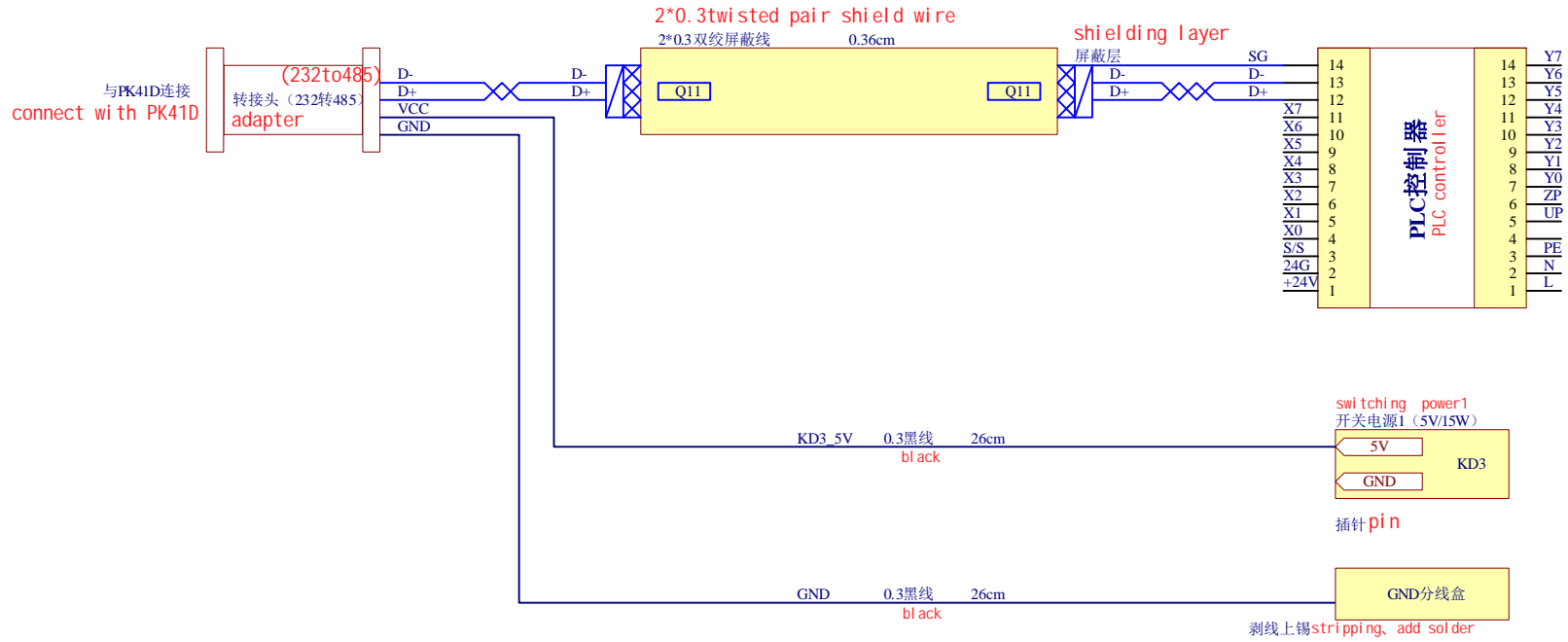
16M-6H
PK20P
升降电机电源
lifting motor power

PK2电器箱升降平台控制接线图V1.0.4

Size	Number	Revision
A4		
Date:	23-Jun-2020	Sheet of
File:	D:\麦科工作文件\PK机型\PK2电器文件\PK2电器接线图\PK2电器接线图(框架接线图).dib	

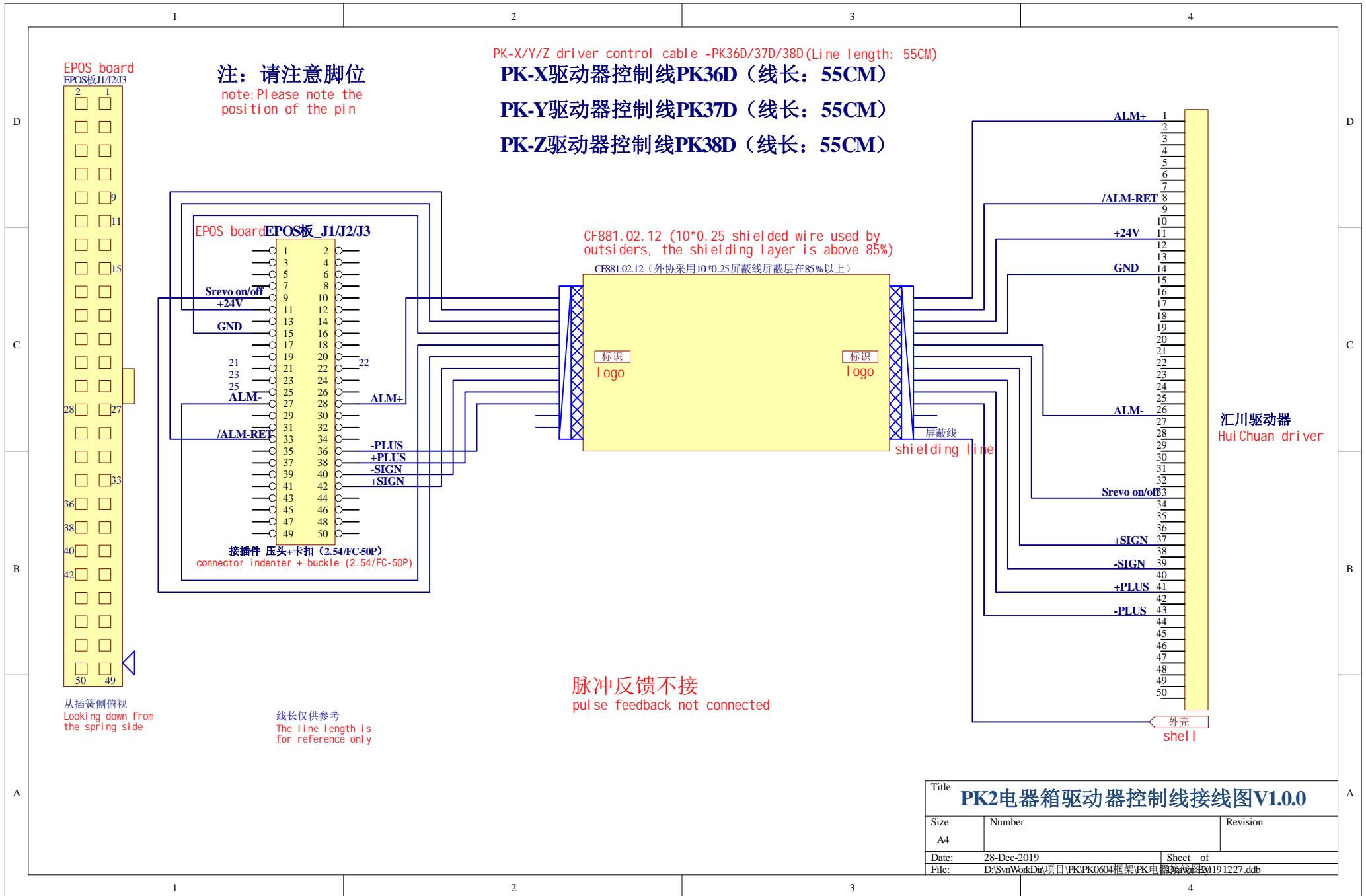
PK-PLC通讯线PK35D

PK-PLC communication cable-PK35D



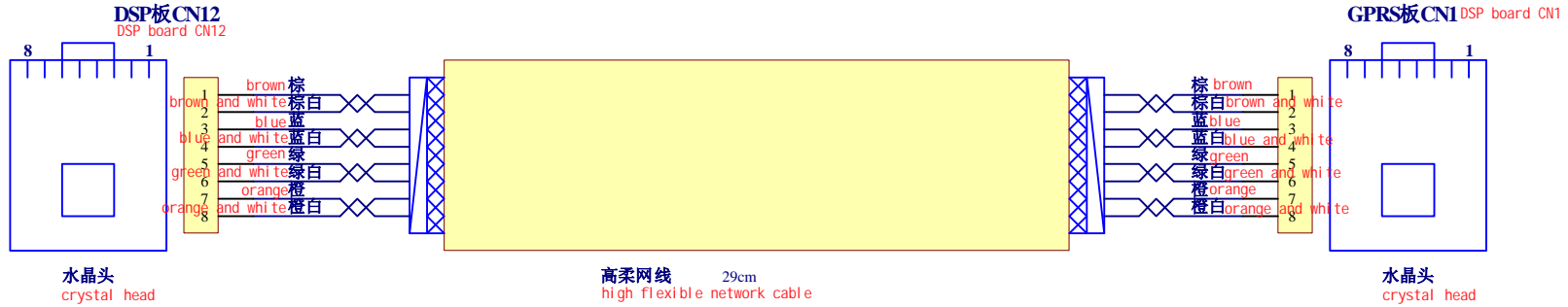
线长仅供参考
The line length is for reference only

Title		
PK电器箱PLC通讯线接线图V1.0.0		
Size	Number	Revision
A4		
Date:	28-Dec-2019	Sheet of
File:	D:\SvnWorkDir\项目\PK\PK0604框架\PK电器箱\20191227.ddb	



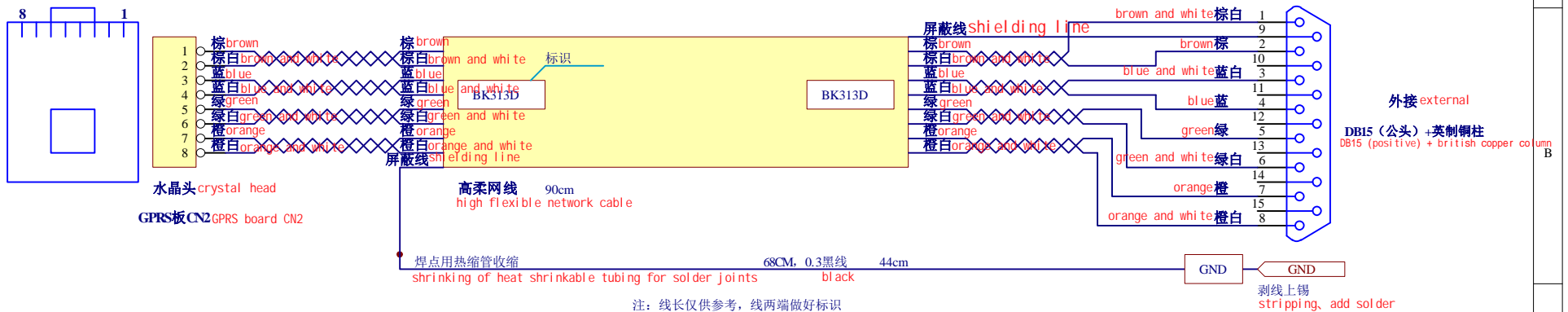
PK-GPRS板CN1通讯线PK39D

PK-GPRS board CN1 communication line PK39D



PK-GPRS板CN2通讯线PK40D

PK-GPRS board CN2 communication line PK40D



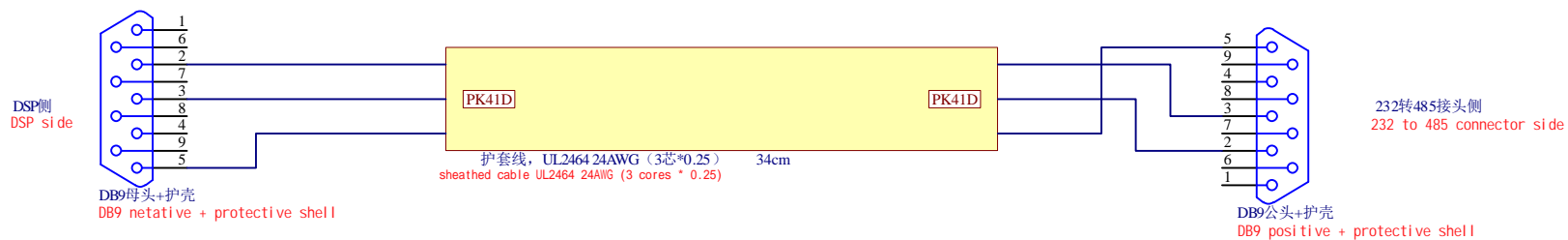
线长仅供参考
The line length is for reference only

注：线长仅供参考，线两端做好标识
note: the line length is for reference only, and both ends of the line are marked

Title PK2电器箱GPRS板通讯线接线图V1.0.0		
Size A4	Number	Revision
Date: 28-Dec-2019	Sheet of	
File: D:\SvnWorkDir\项目\PK\PK0604\框架\PK电器箱\图档\191227.dwg		

PK-232通讯线PK41D

PK-232 communication cable-PK41D



线长仅供参考
The line length is
for reference only

Title PK2-232通讯线接线图V1.0.0		
Size A4	Number	Revision
Date: 28-Dec-2019	Sheet of	
File: D:\SvnWorkDir\项目\PK\PK0604框架\PK电器原理图\191227.ddb		